

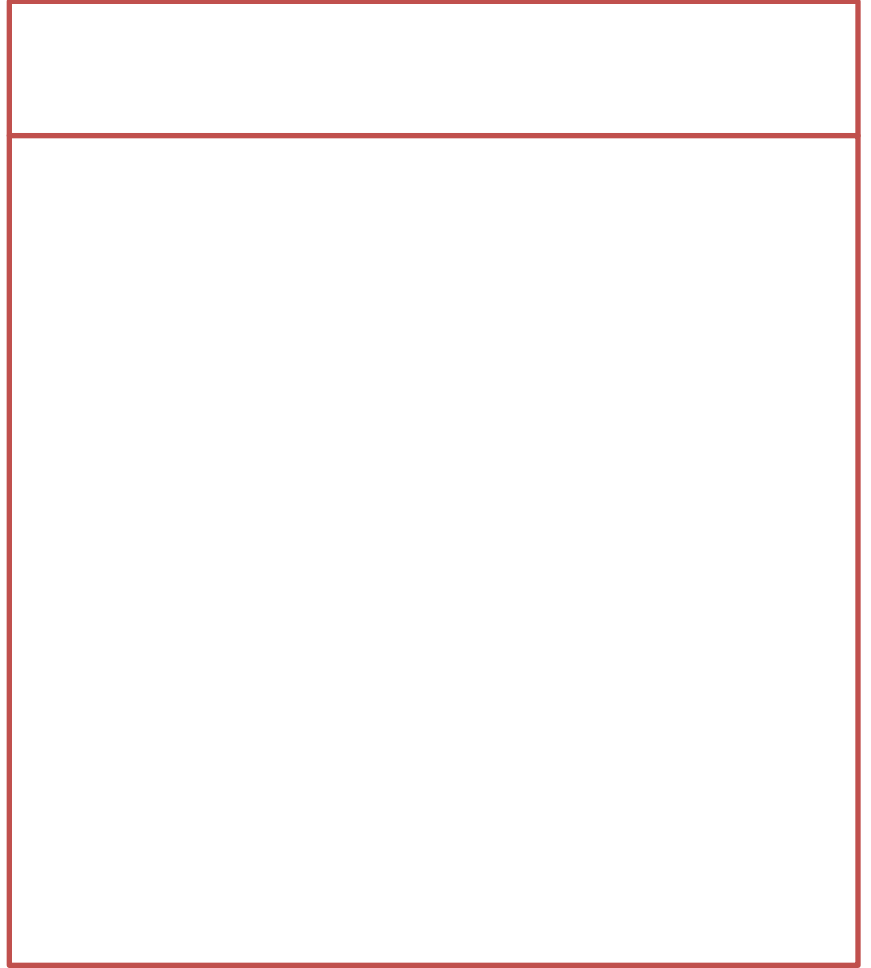
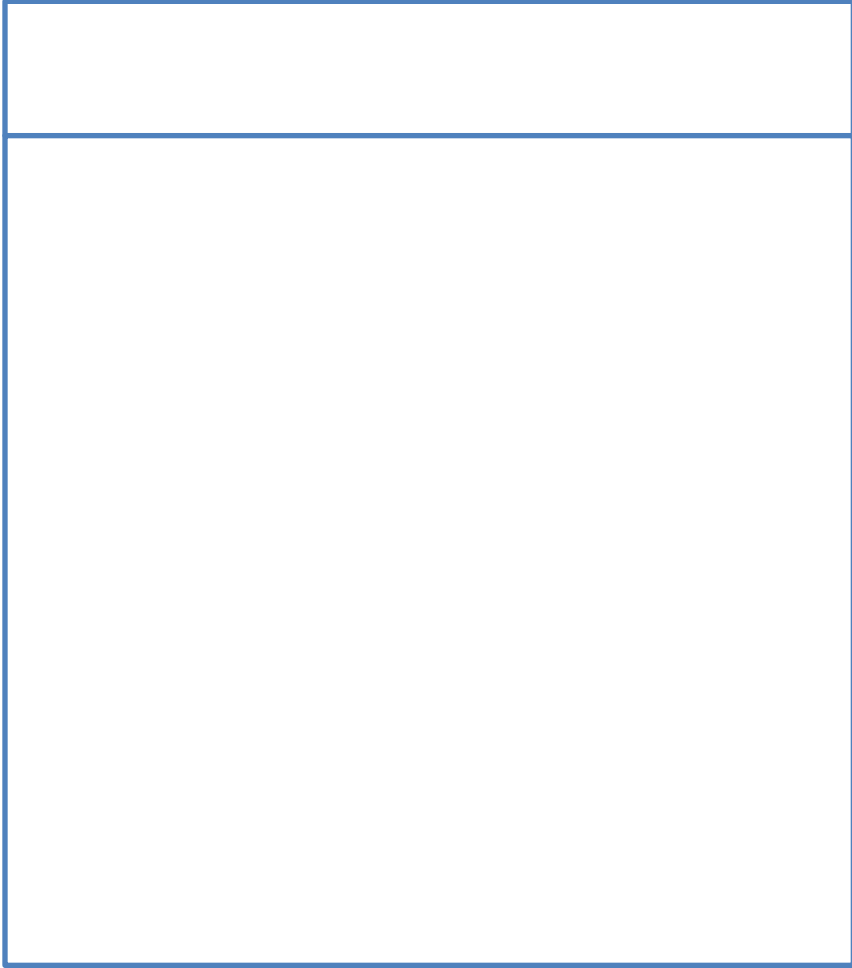
Jean-Marc Siroën : PSL, Université Paris-Dauphine,
LEDa - DIAL.

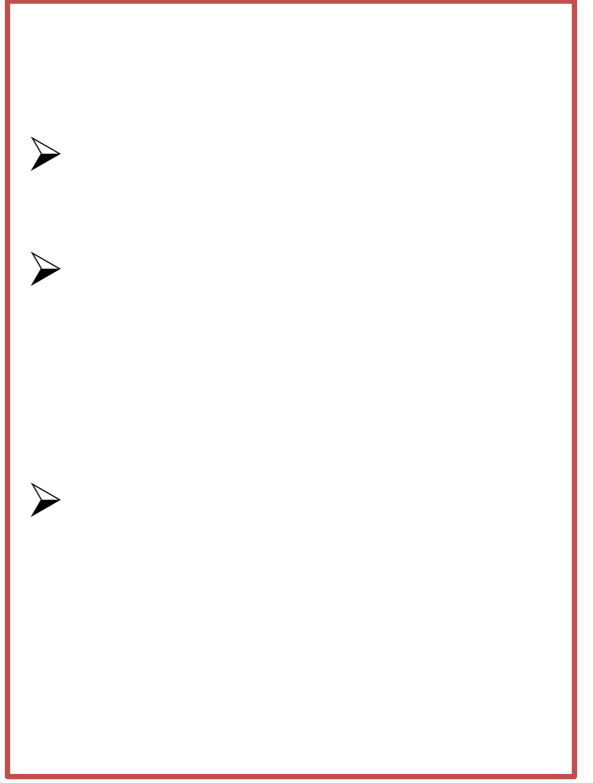
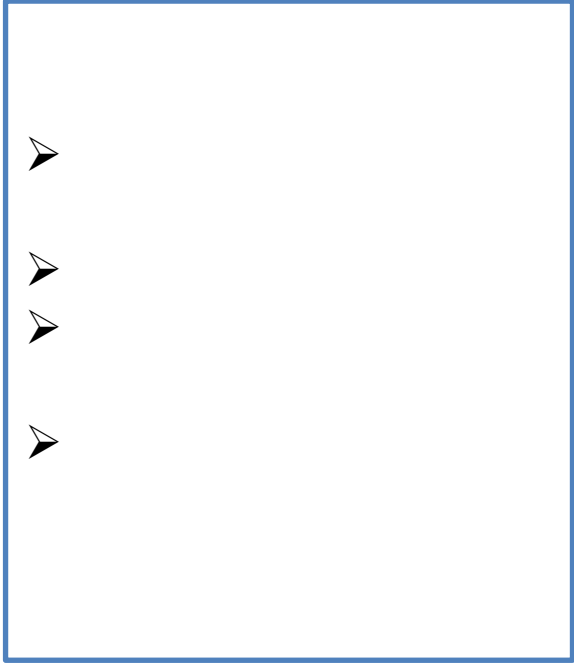
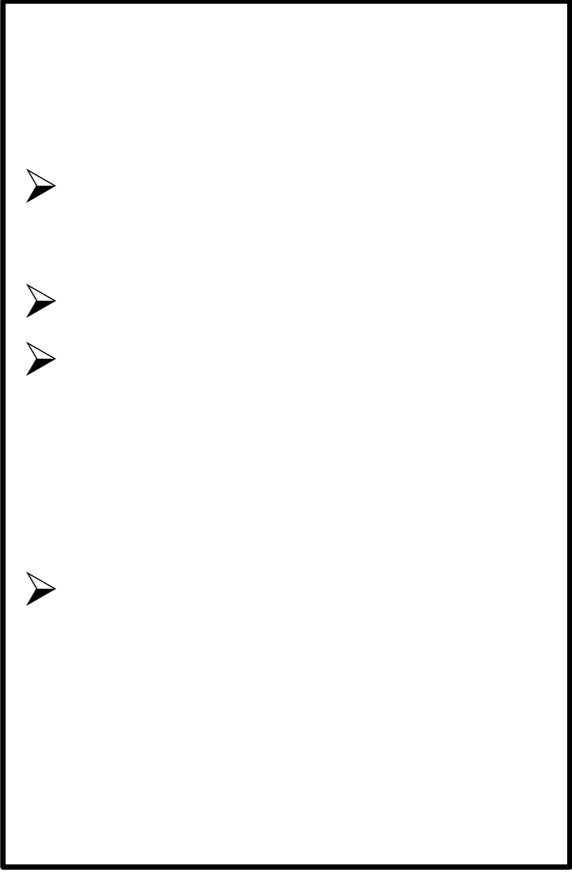
:

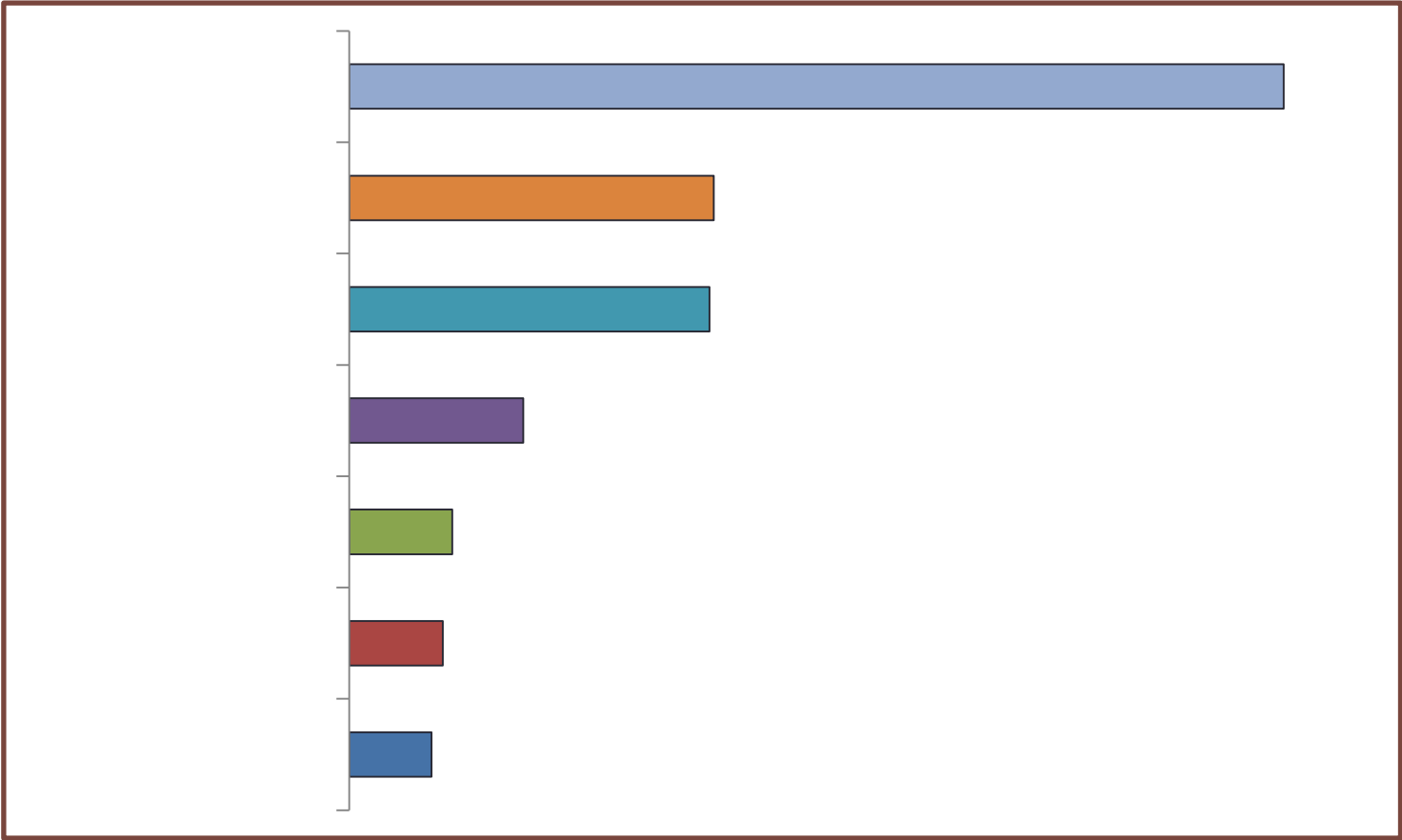
Joaquim Guilhoto, de São Paulo, FEA, OECD

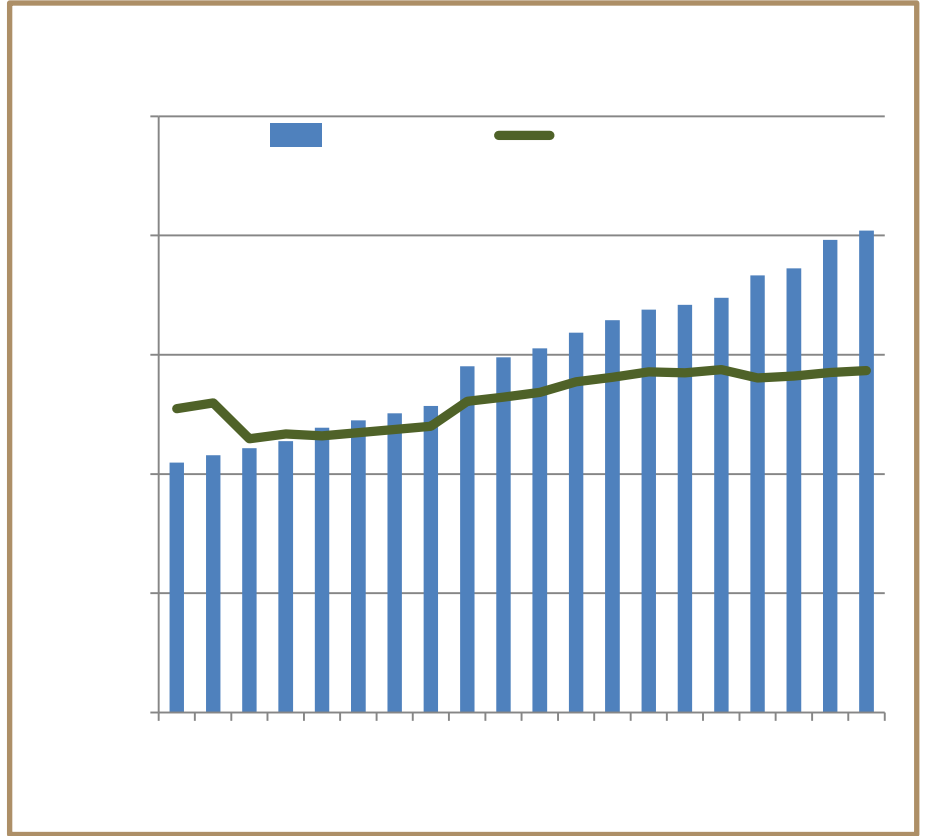
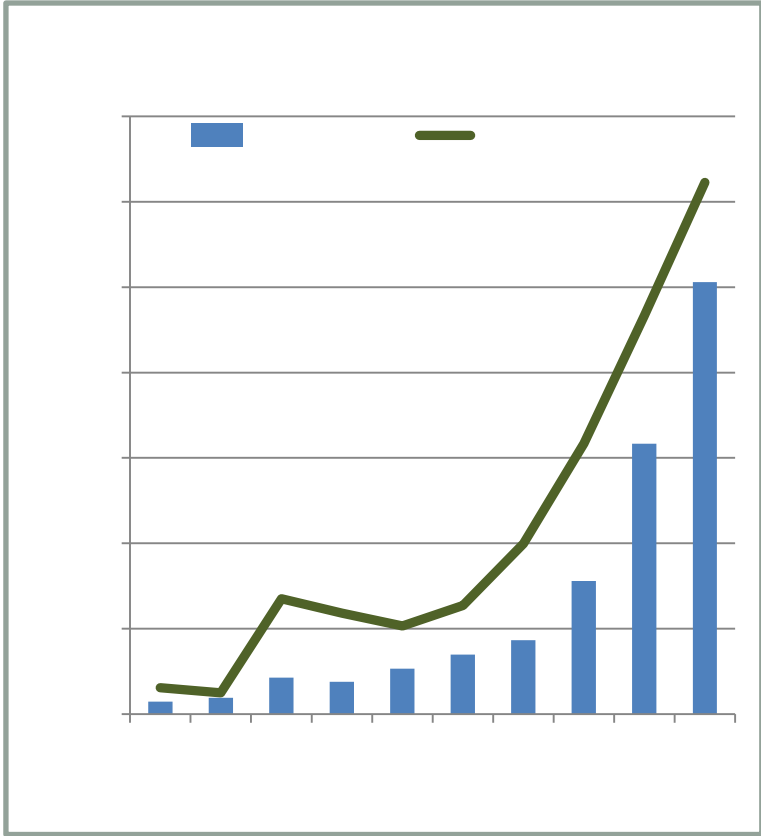
Arnold Njike, doutorando, Université Paris-Dauphine, LEDa DIAL

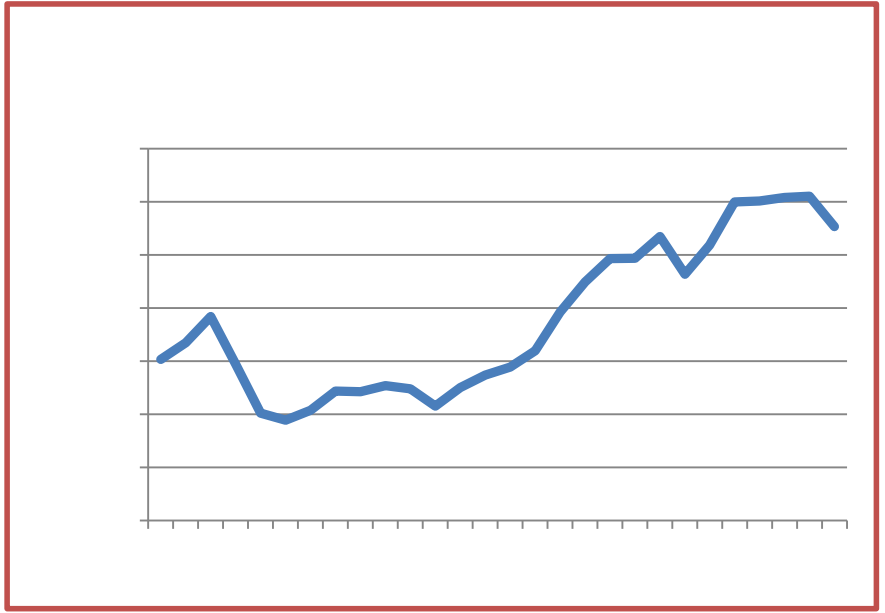
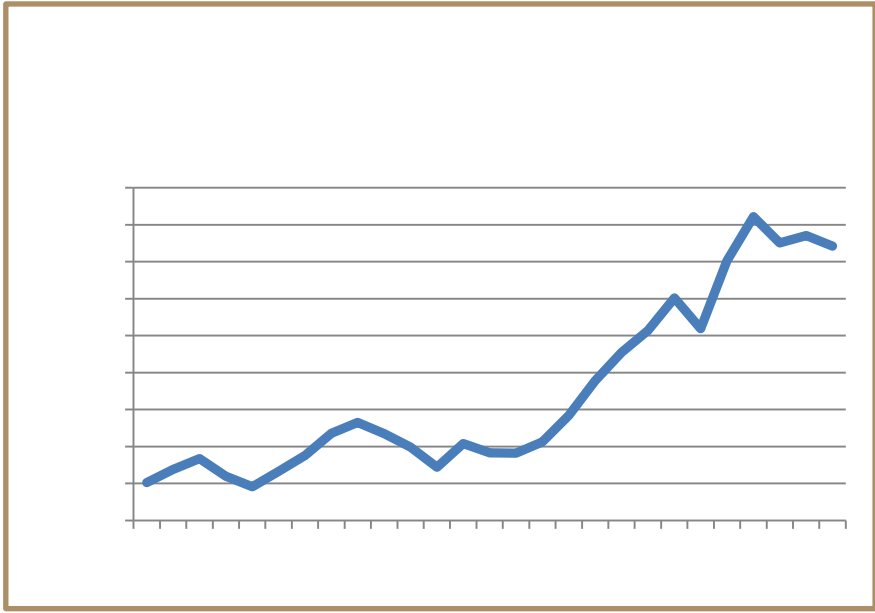
Louisiana Teixeira, doutoranda, Université Paris-Dauphine, LEDa DIAL e UFRJ



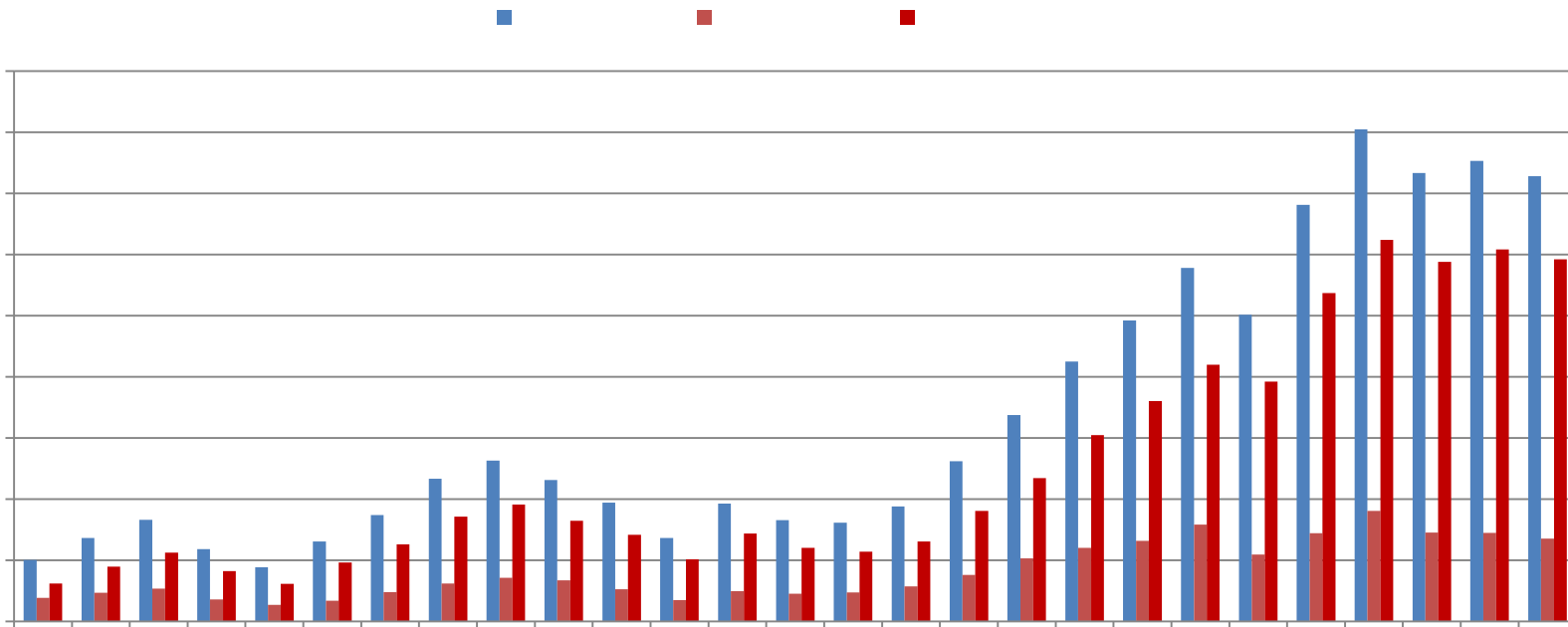


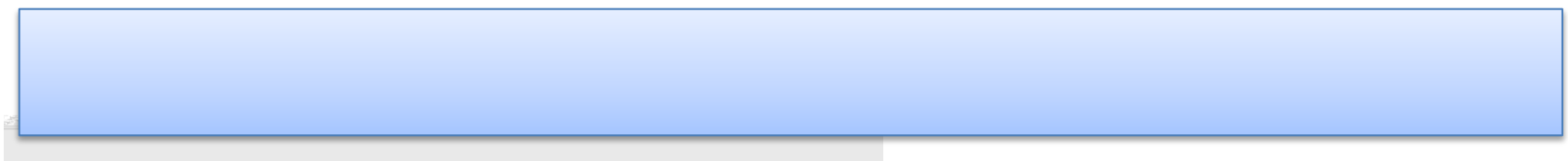
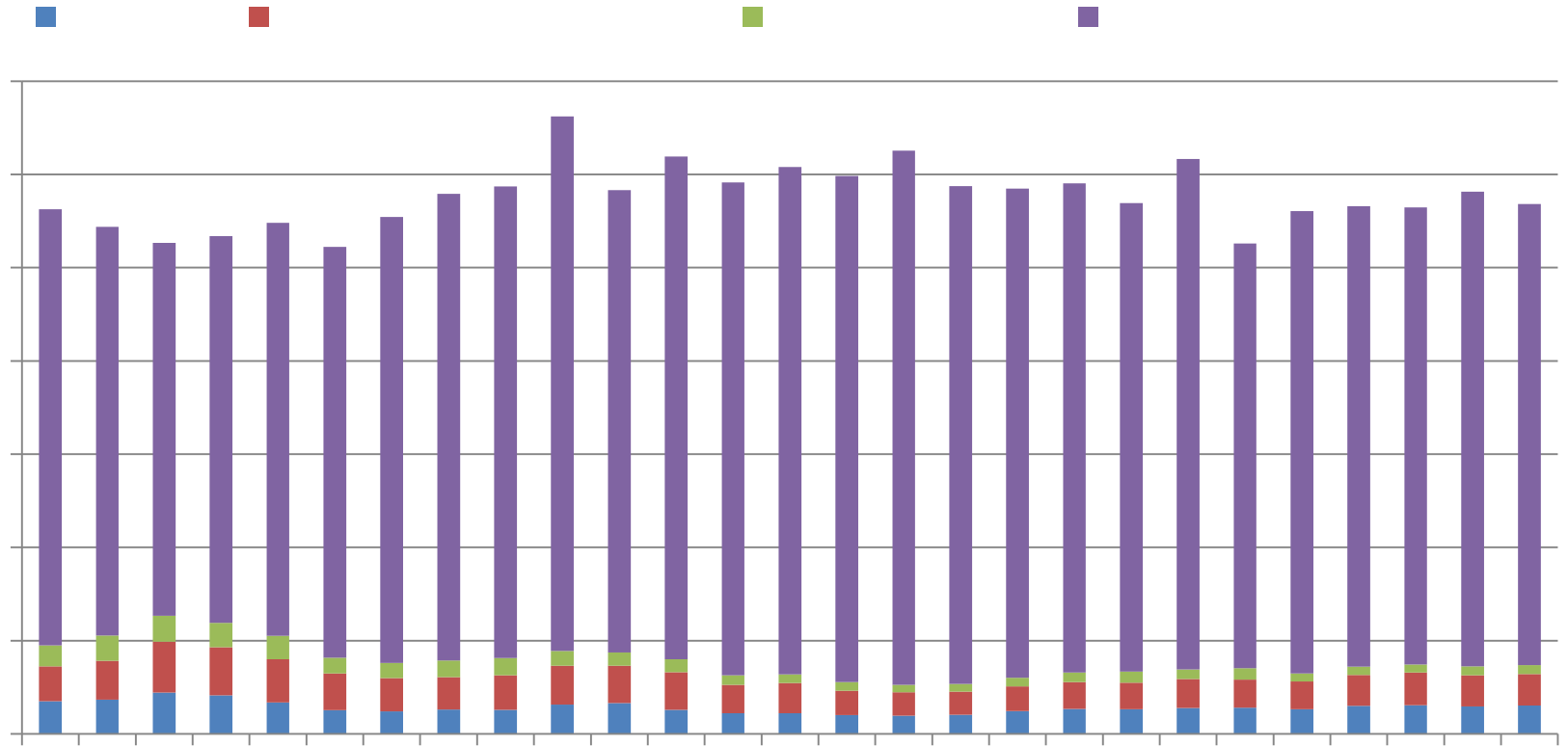


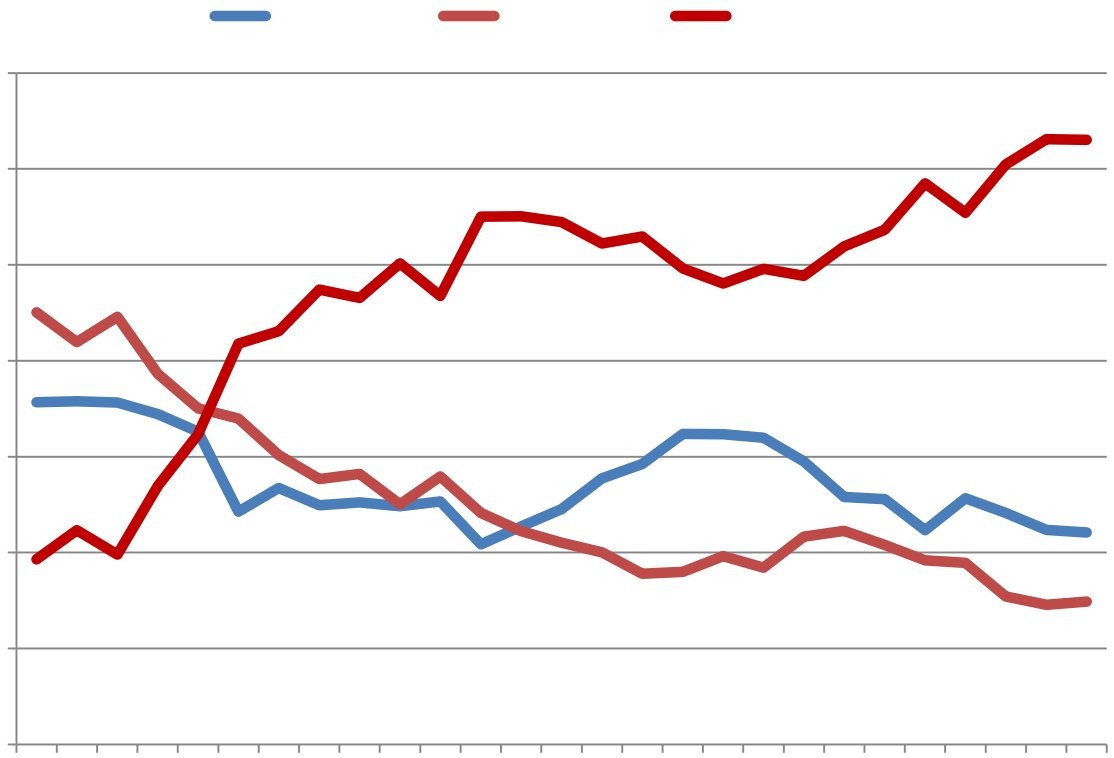


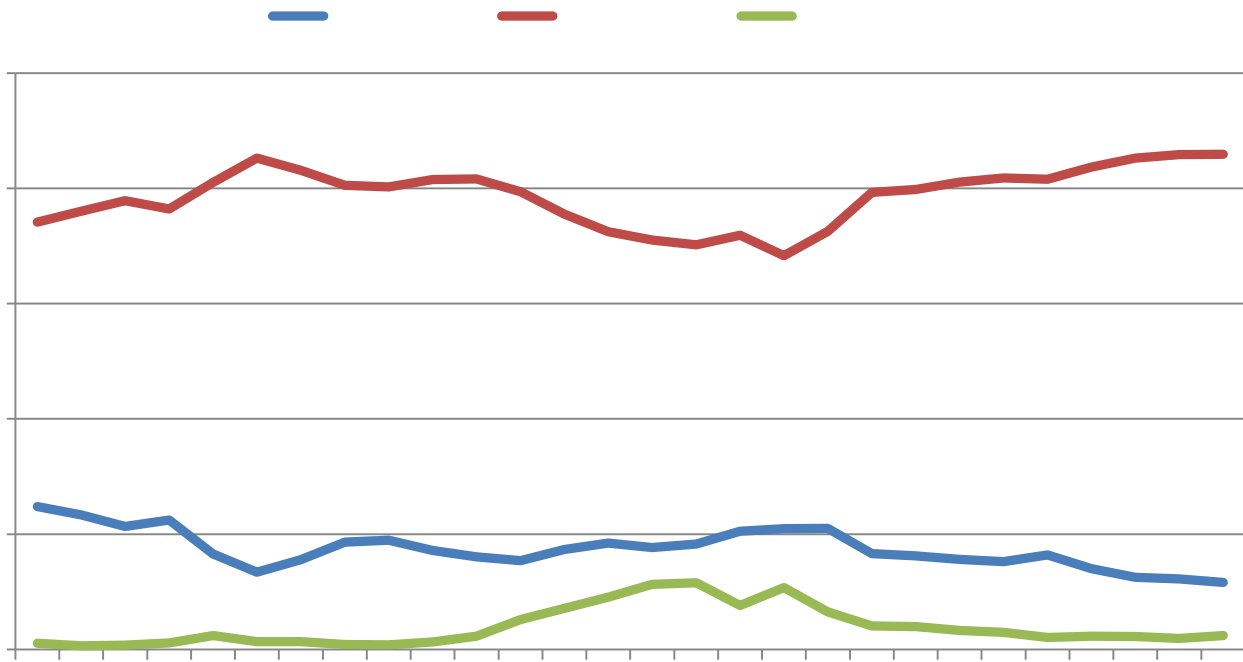


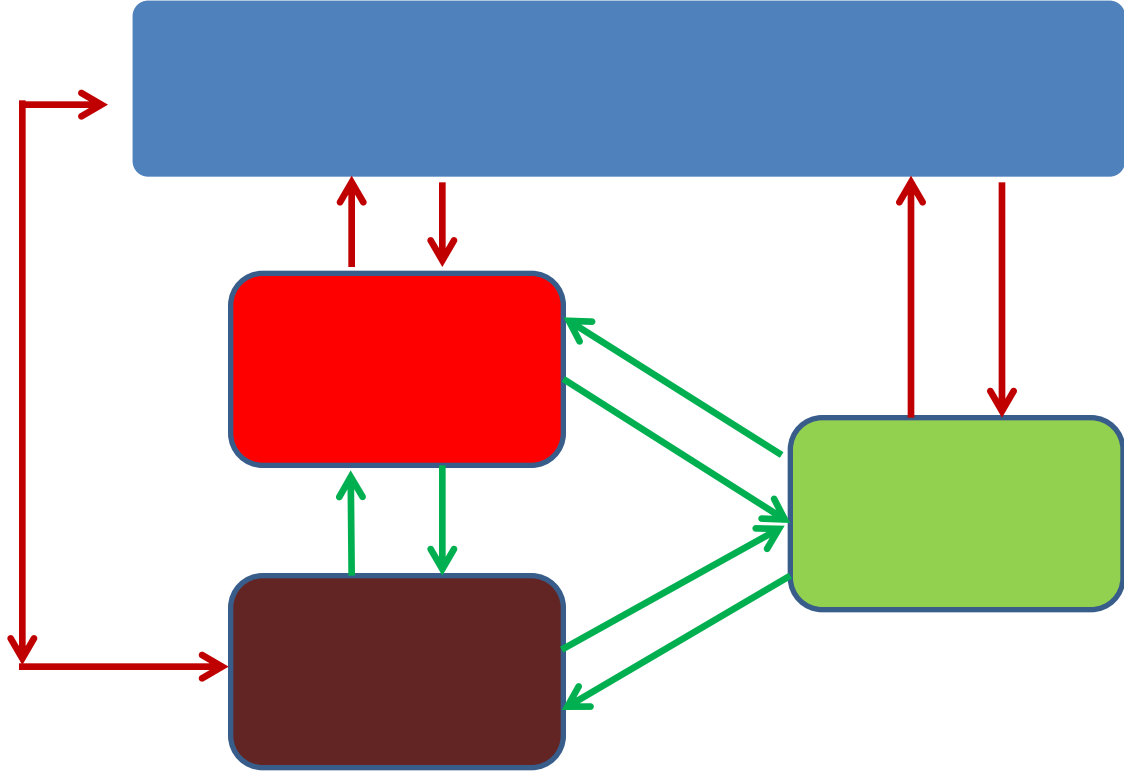


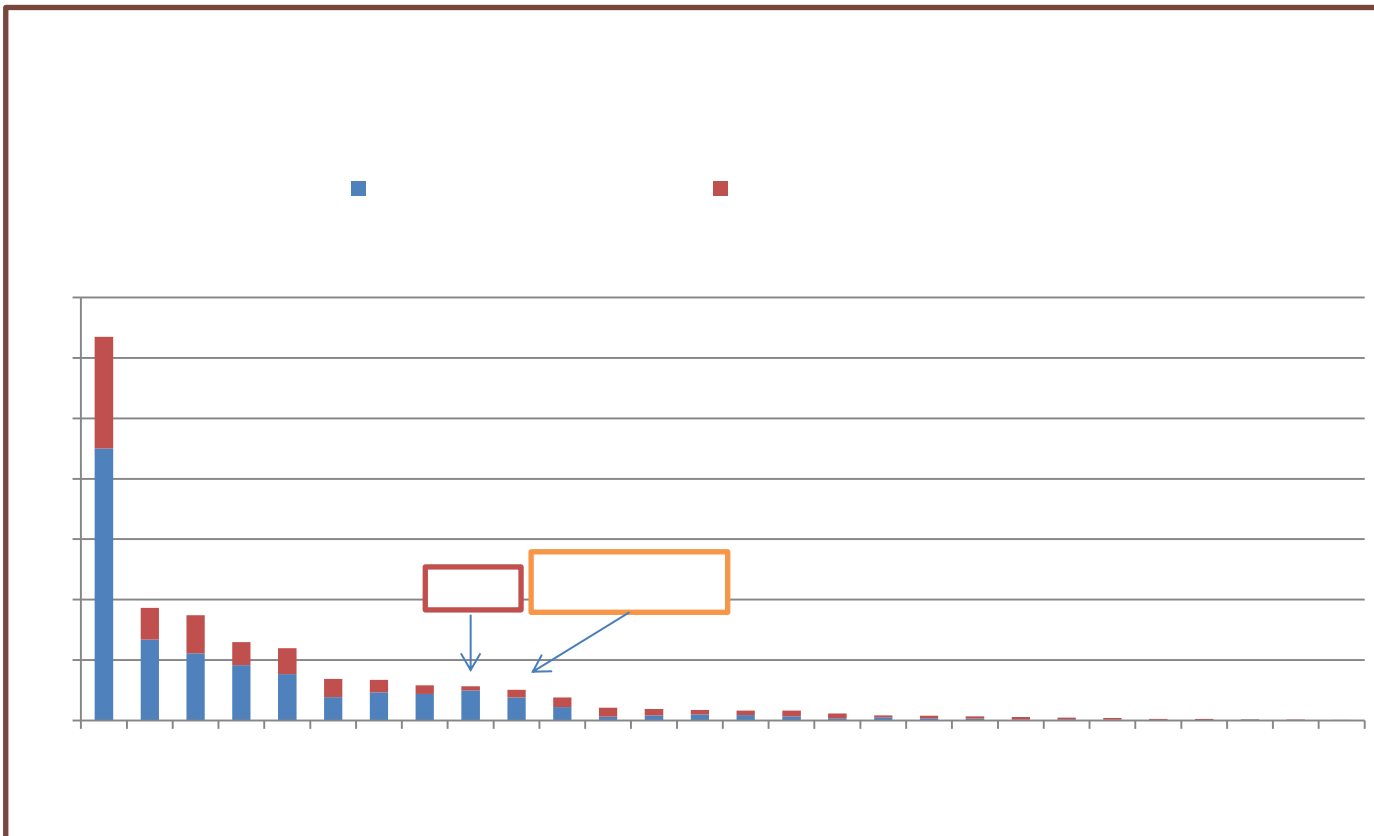












*RAM = Amazonas
menos Manaus*

